

Texas High School Coastal Monitoring Program at Ball High School: 2022-2023

July 2023

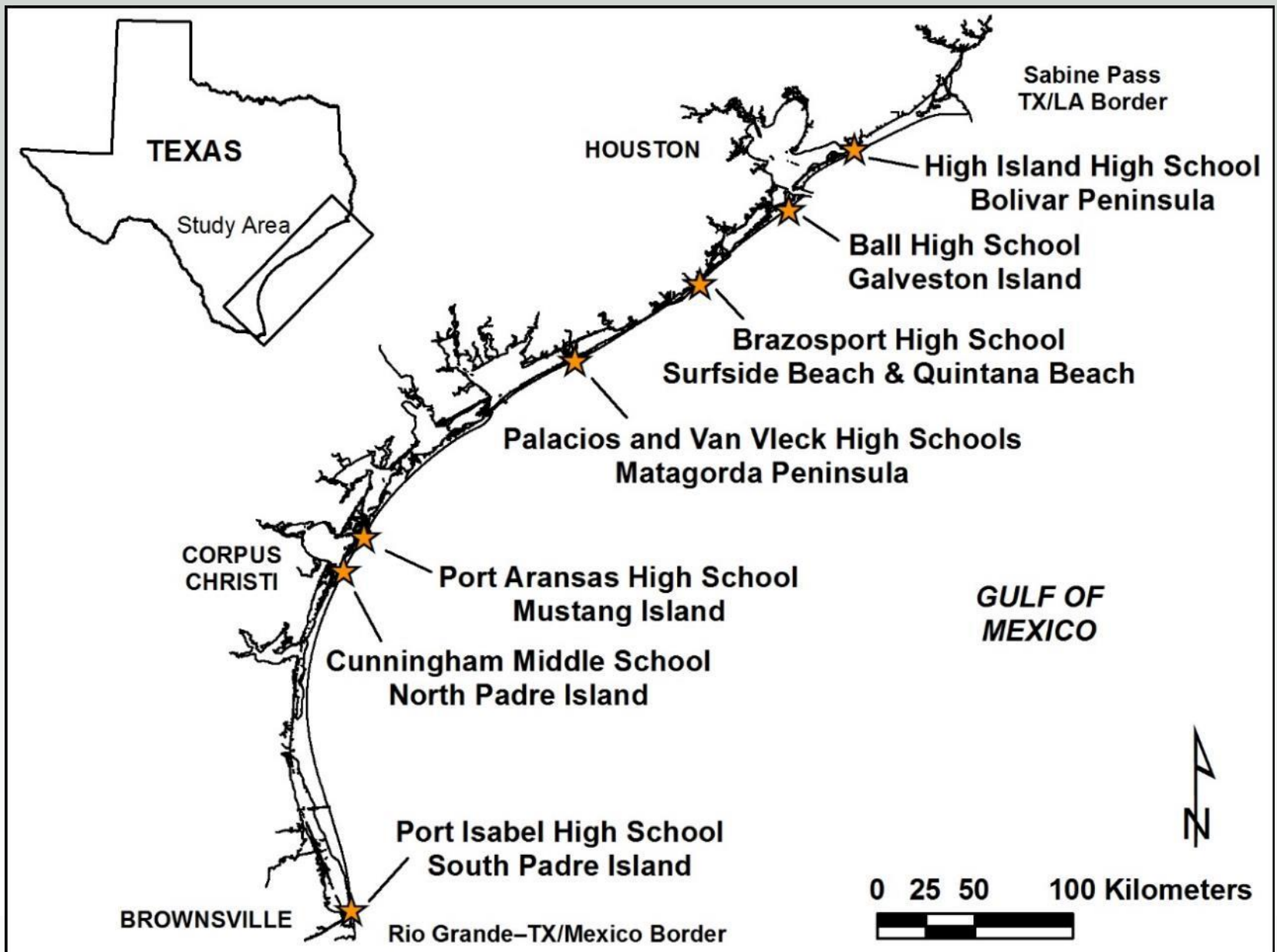


BUREAU OF
ECONOMIC
GEOLOGY

Texas High School Coastal Monitoring Program

- Provide high school students with a real-world learning experience by monitoring the beach and dune environment.
- Obtain a better understanding of the relationship between coastal processes, beach morphology, and shoreline change
- Increase public awareness and understanding of coastal change, processes, and hazards by making data and findings available for coastal managers and scientists, students and teacher, and the general public.





Student Collected Data

- Topographic transect oriented perpendicular to the shoreline
 - measured from the same starting point landward of the foredune and oriented in the same direction.
- Estimates of processes acting on the beach
 - wind direction and speed; wave direction, height, and period; and longshore current direction and speed
- GPS survey of the vegetation line and shoreline
 - quantitative data on the position of the shoreline and vegetation line



Galveston Island Study Sites



2022-2023 field trips

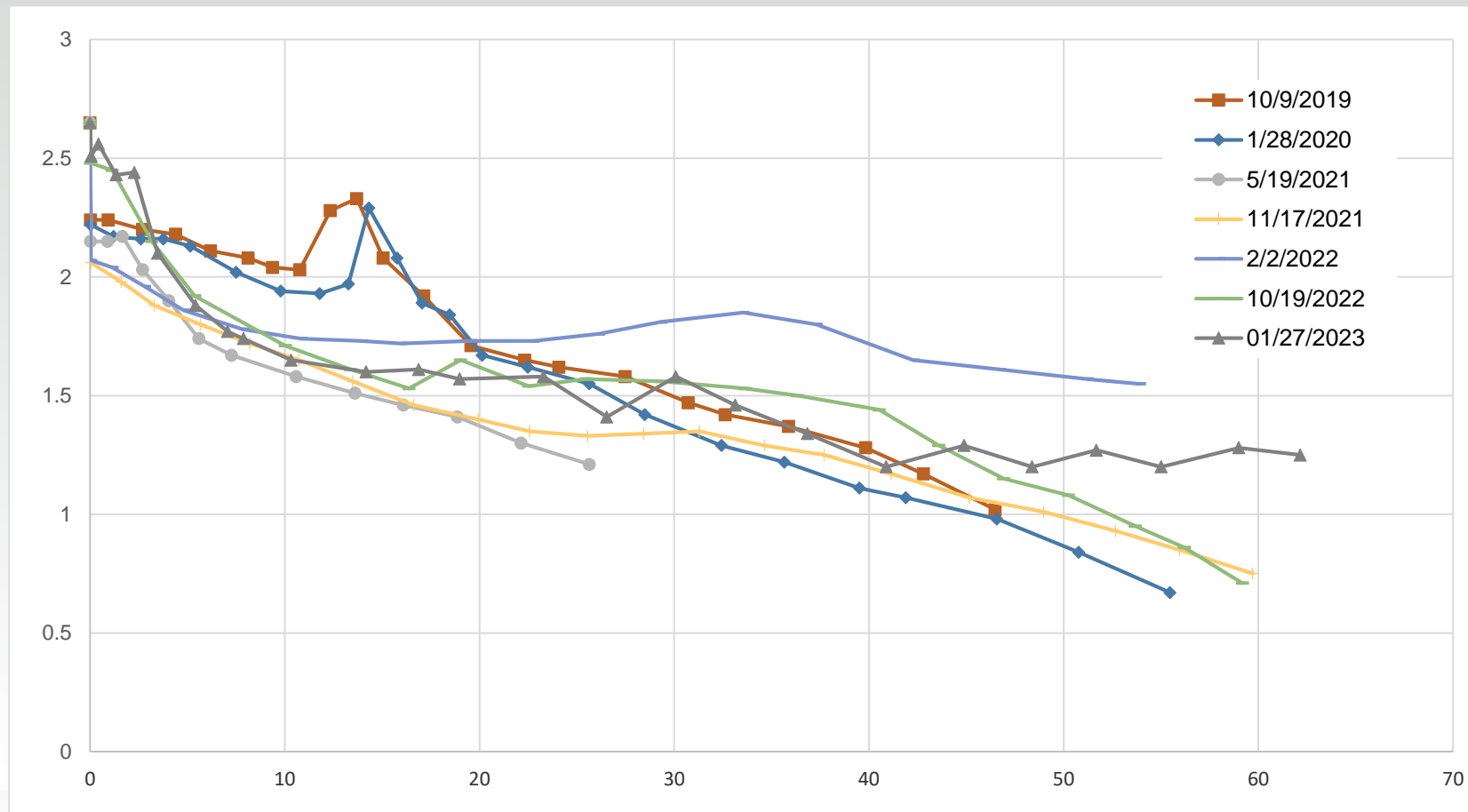
October 19, 2022



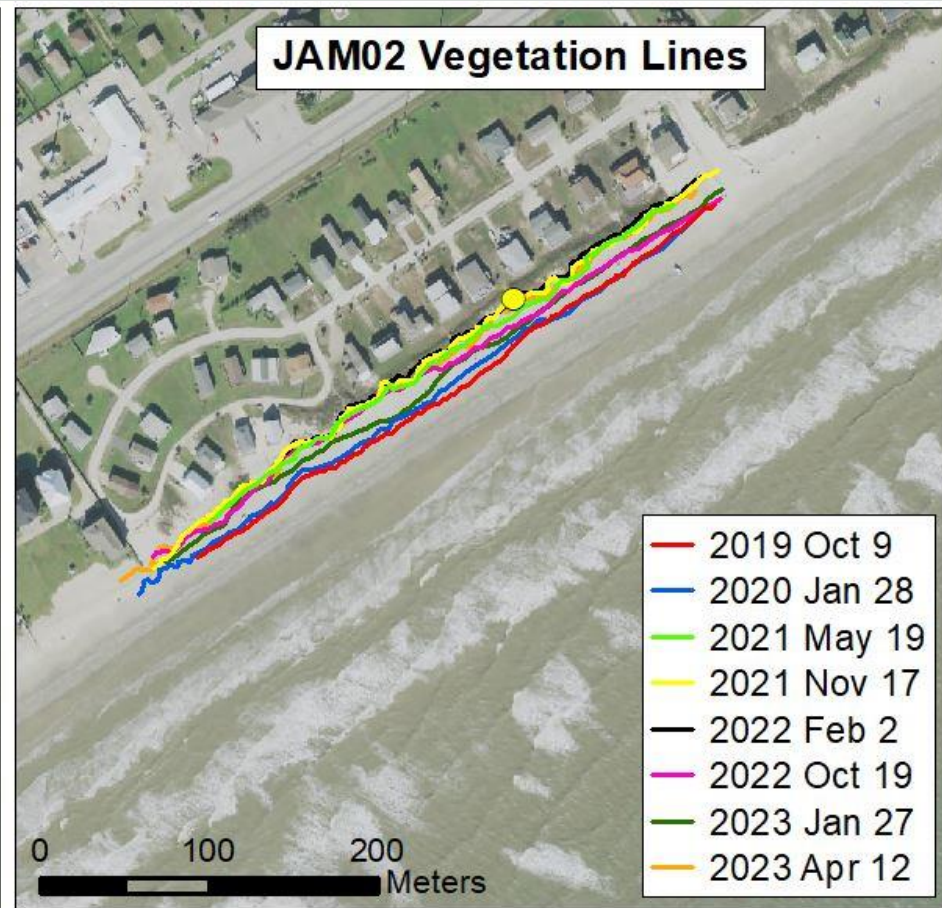
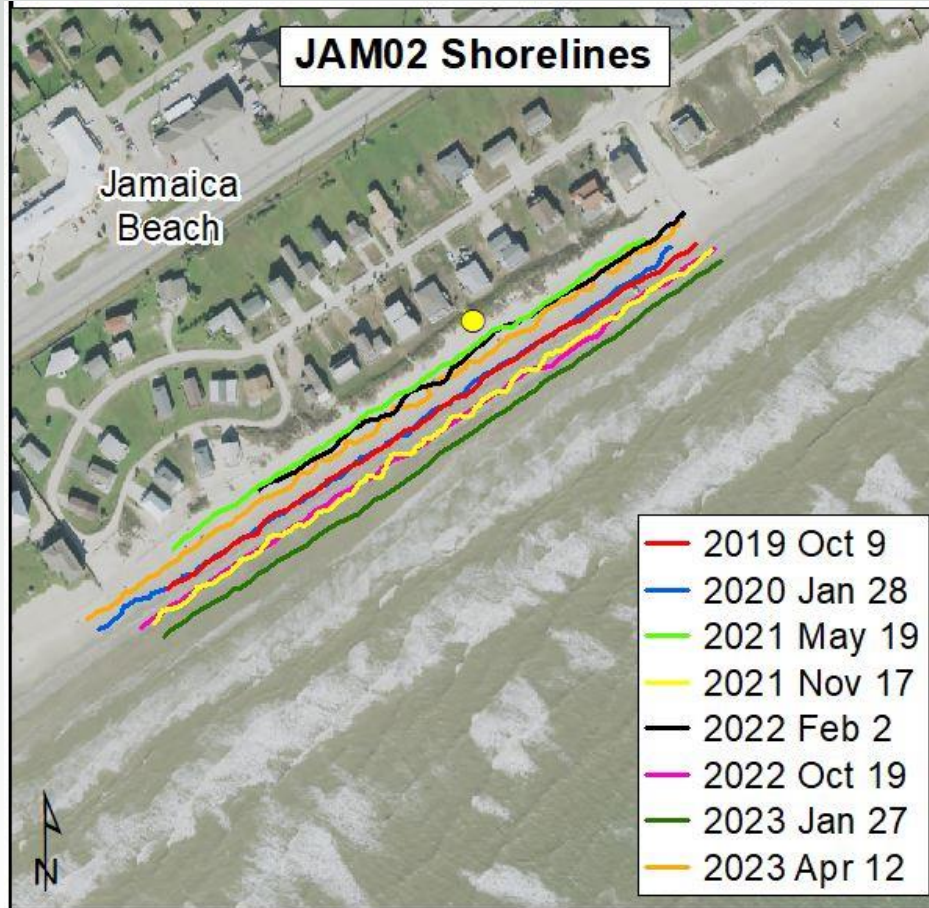
January 27, 2023



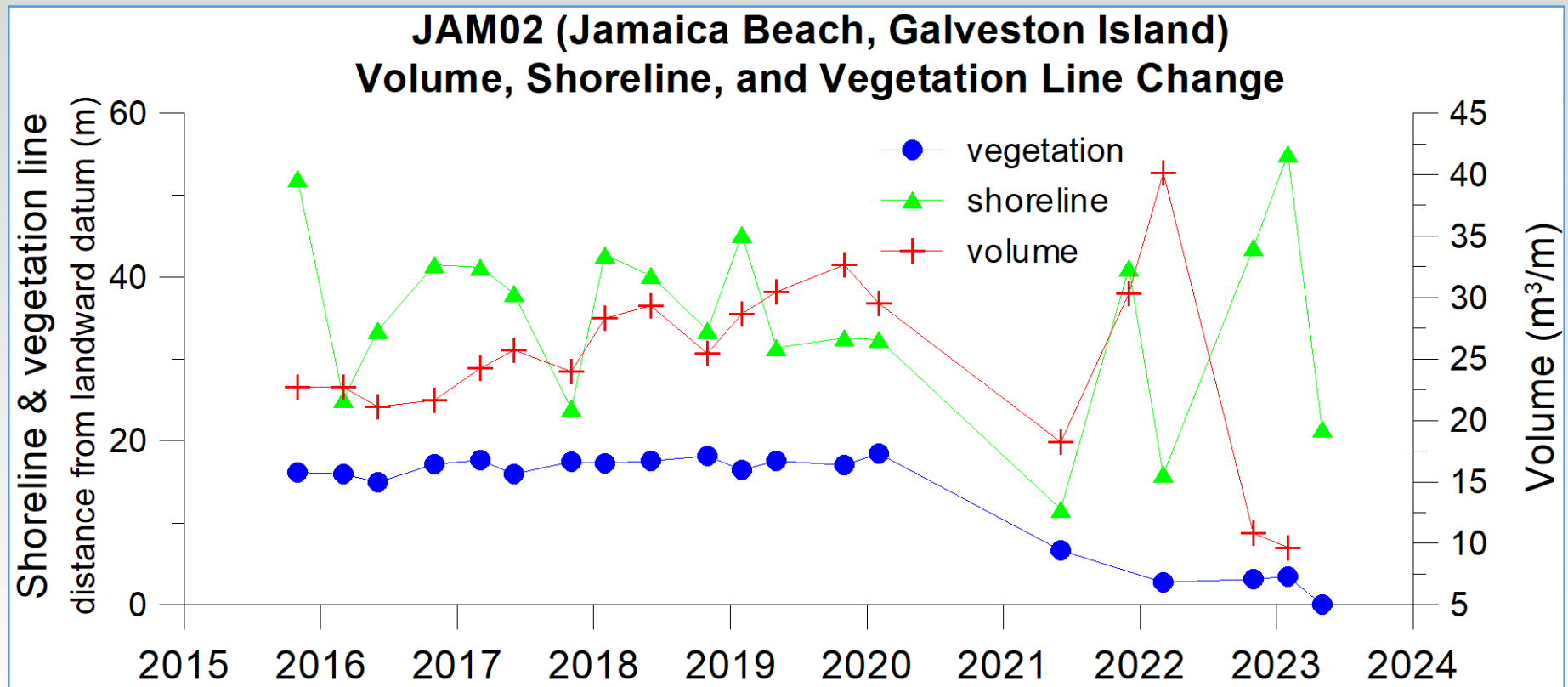
JAM02: fall 2019-winter 2023



JAM02 shore and vegetation line positions

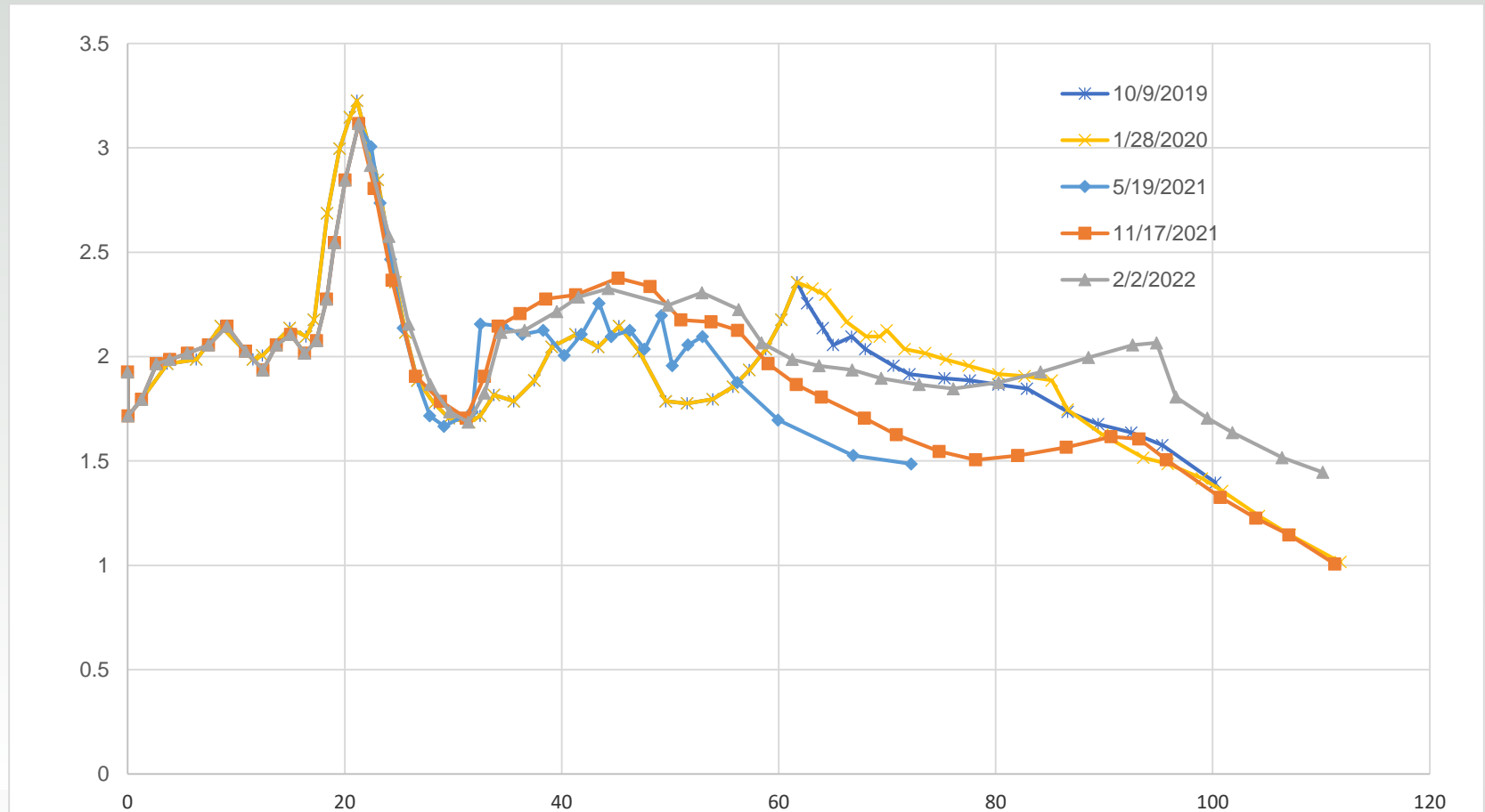


JAM02: shoreline, vegetation line, and volume changes

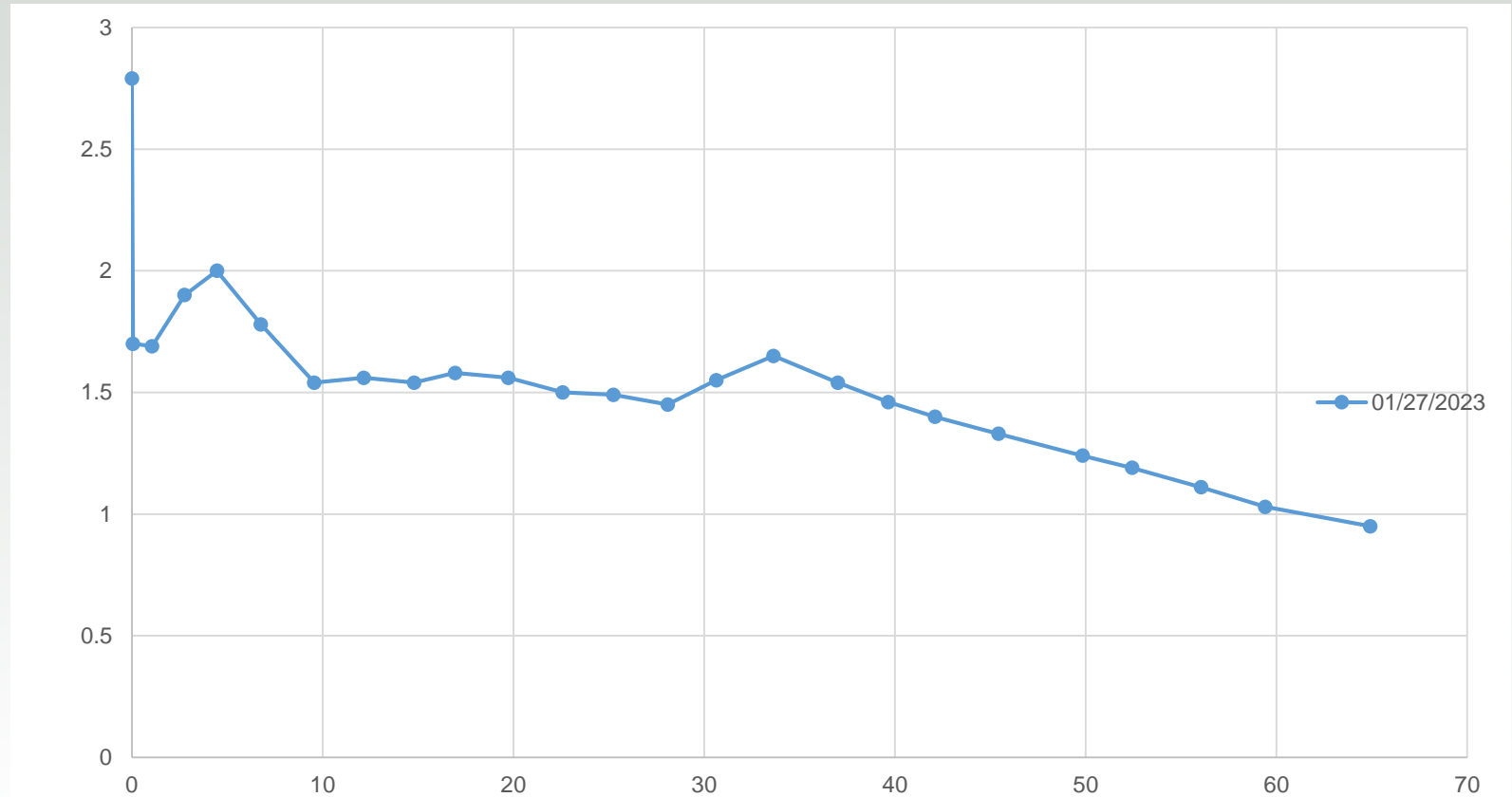


Sediment volume was calculated above 1 meter NAVD88.

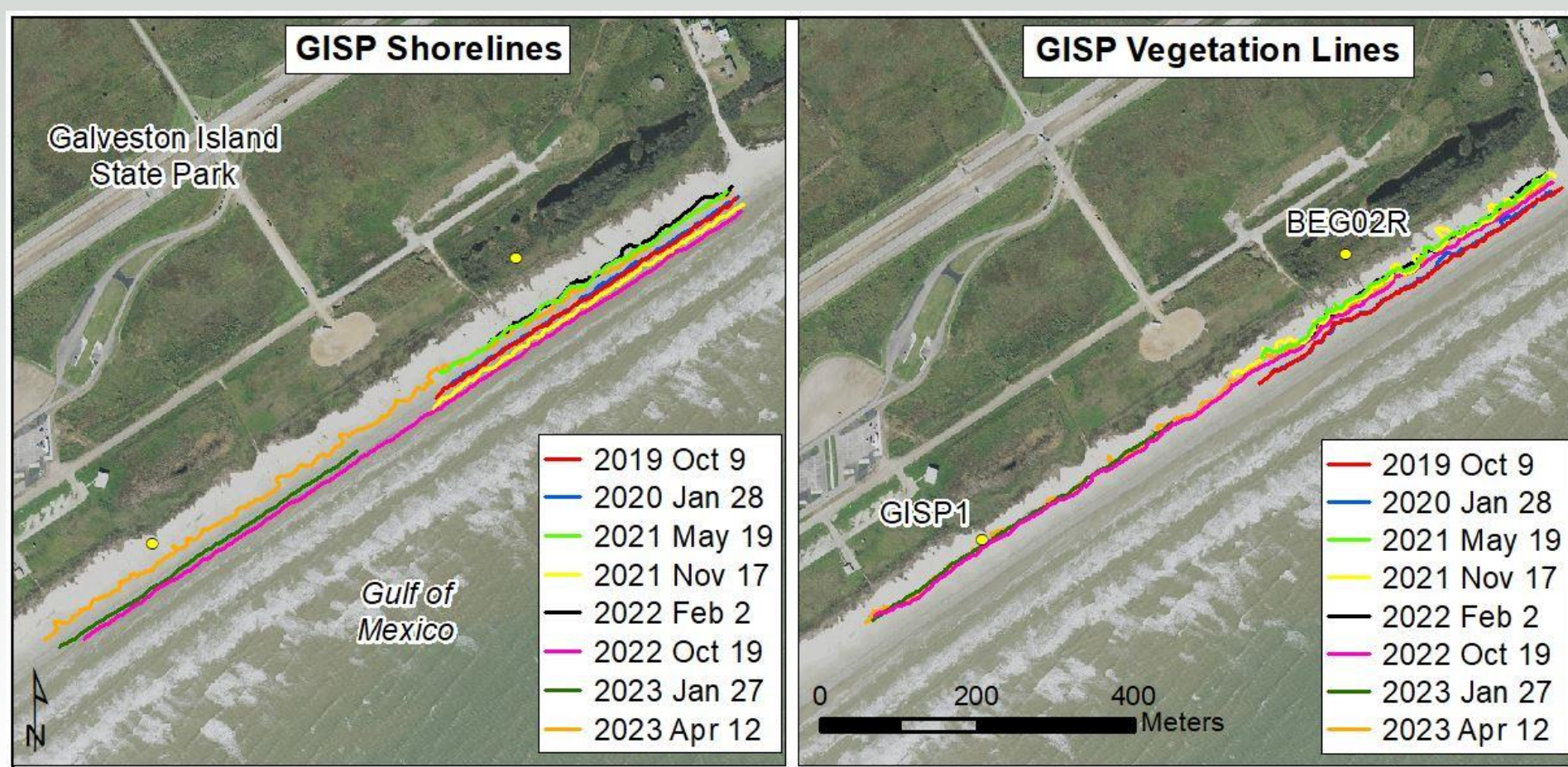
BEG02 : spring 2021- winter 2022



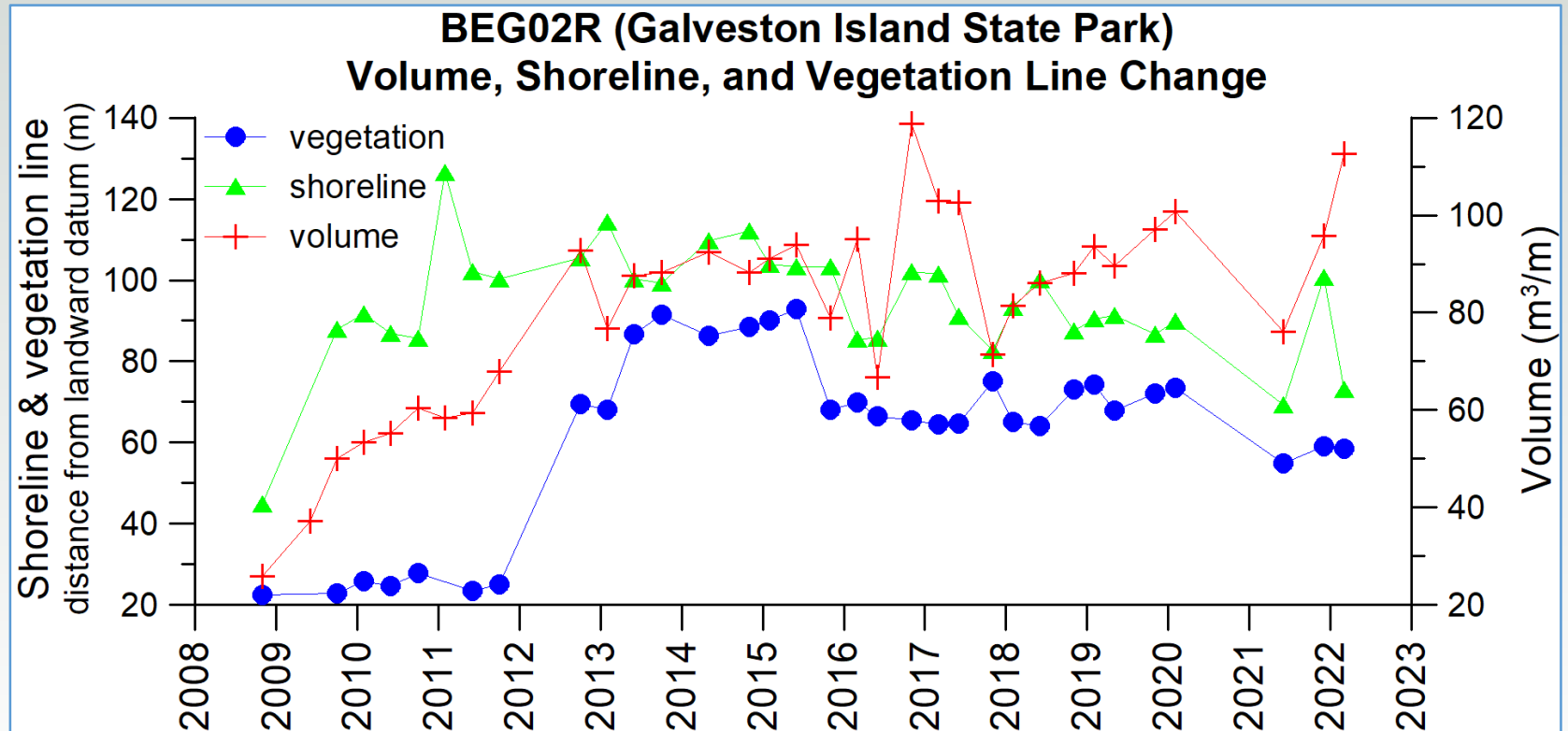
New site GISP1 : winter 2023



BEG02 shore and vegetation line positions

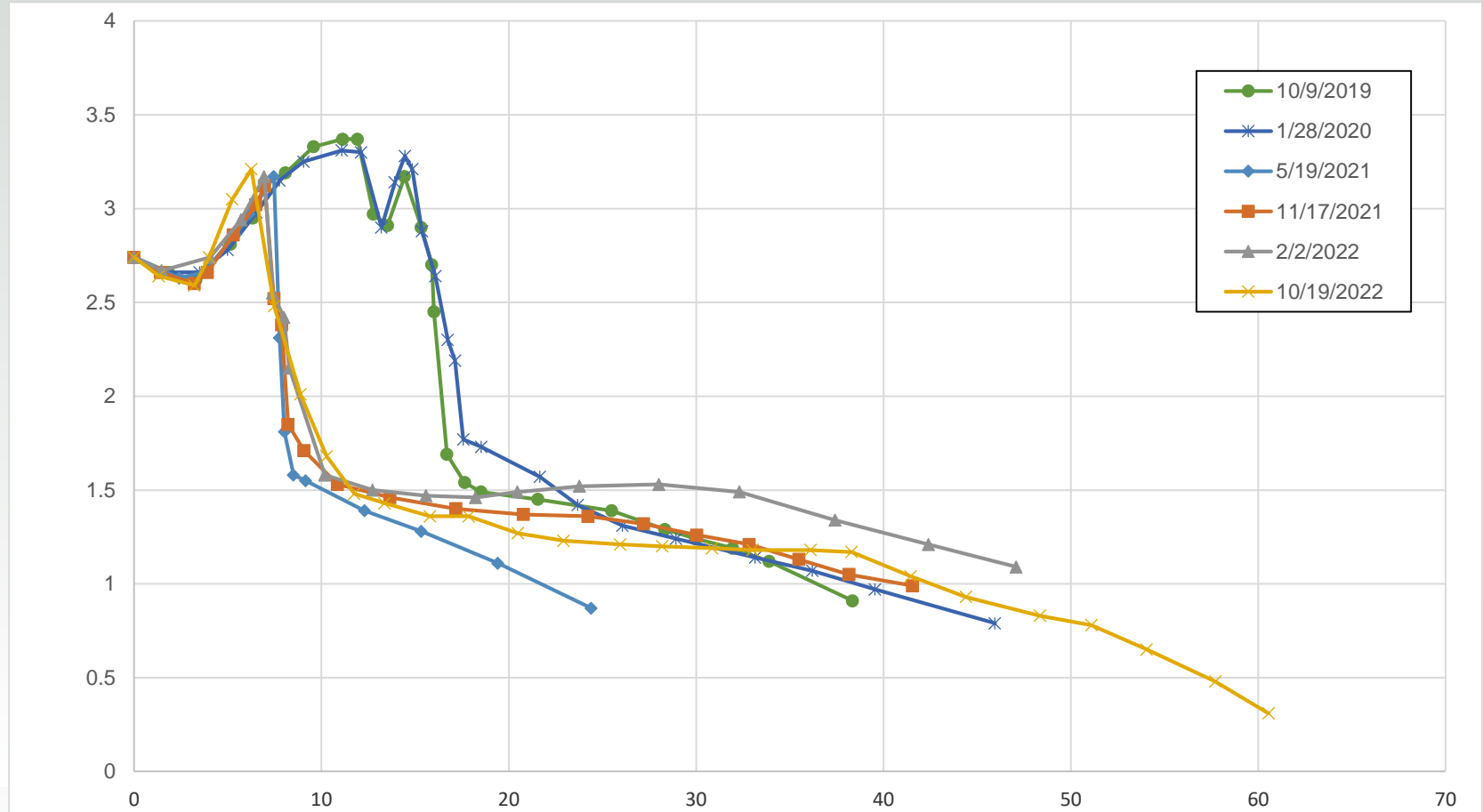


BEG02: shoreline, vegetation line, and volume changes

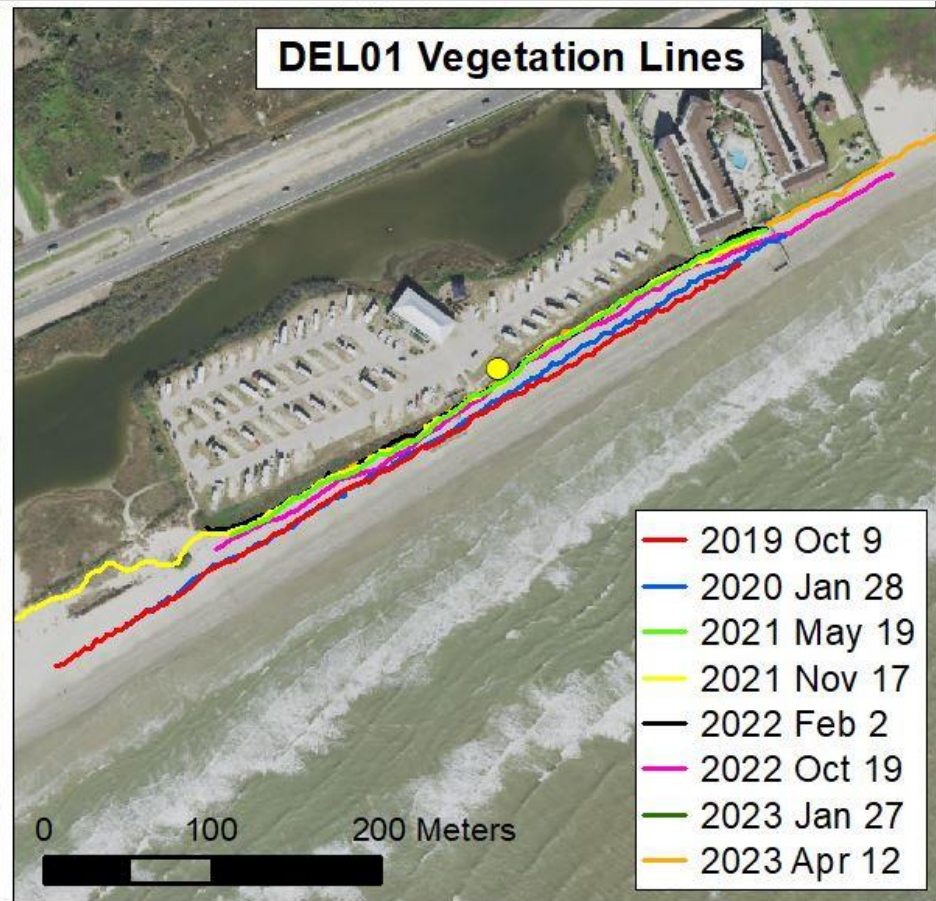
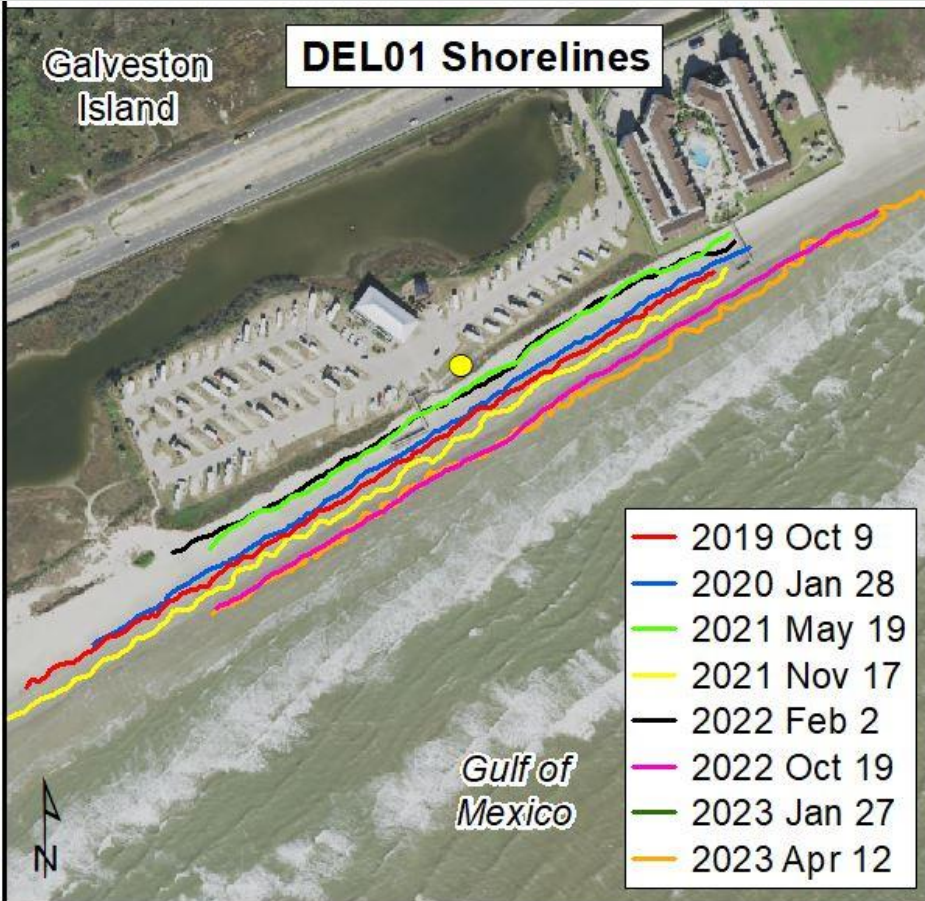


Sediment volume was calculated above 1 meter NAVD88.

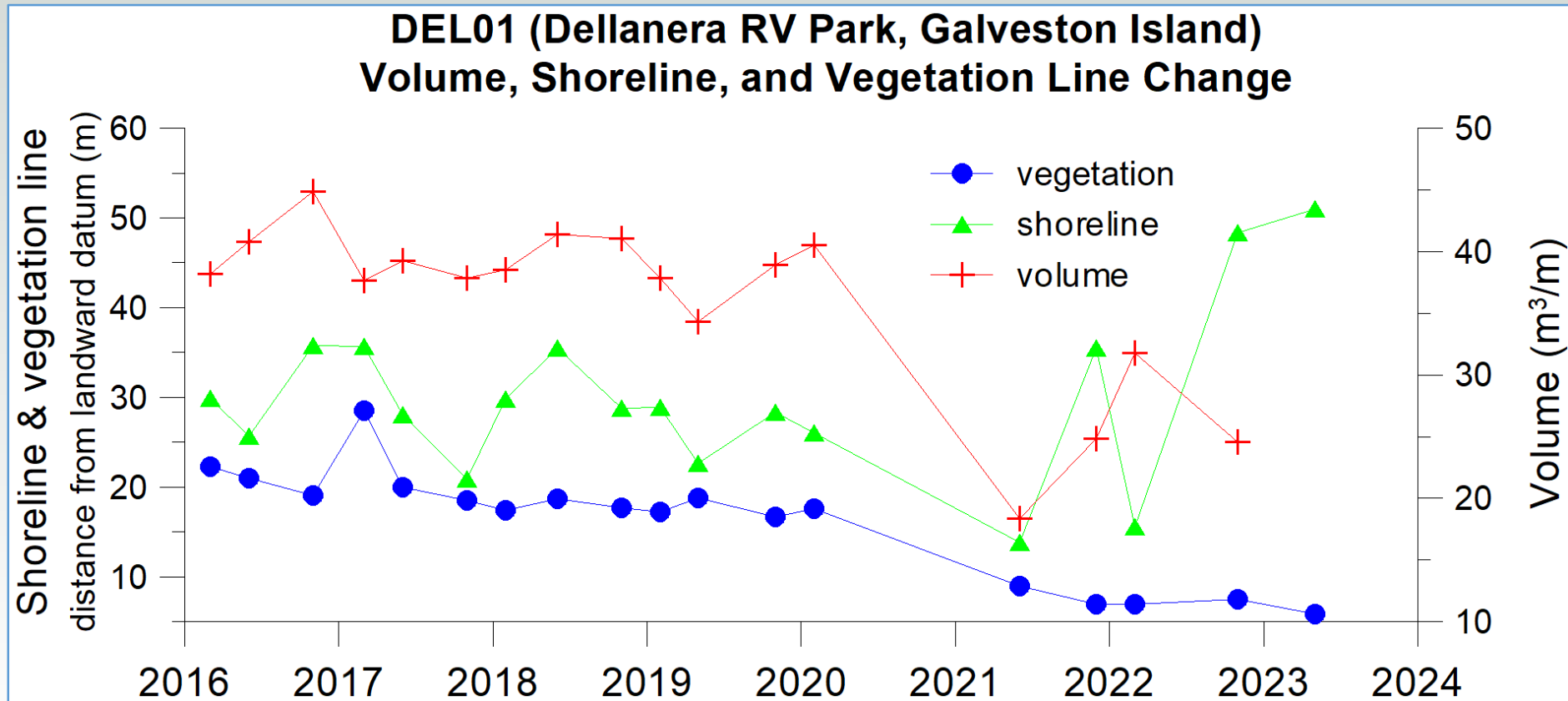
DEL01: fall 2019-fall 2022



DEL01 shore and vegetation line positions



DEL01: shoreline, vegetation line, and volume changes



Sediment volume was calculated above 1 meter NAVD88.

Babe's Beach shoreline positions

