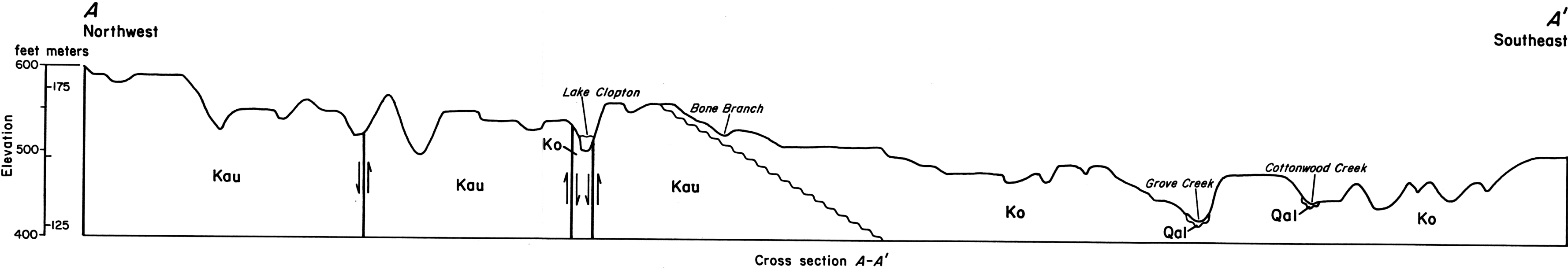
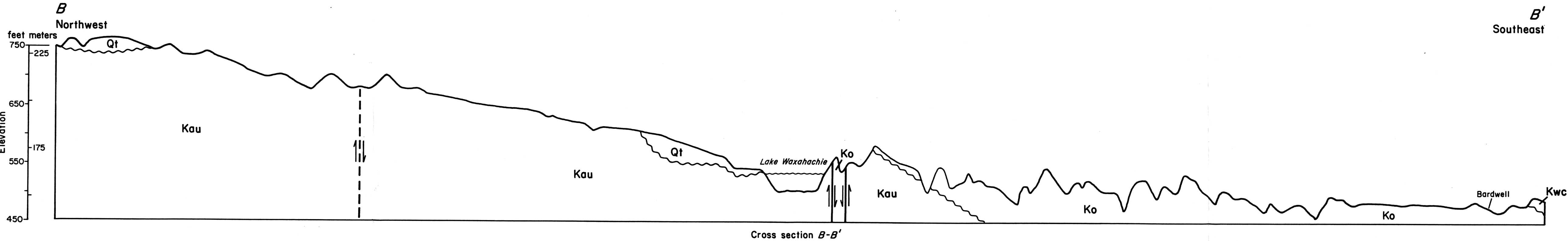


Plate 2
GEOLOGIC CROSS SECTIONS OF PROPOSED DALLAS-FORT WORTH SSC SITE



0 5000 feet
0 1500 meters
Vertical exaggeration 40 X



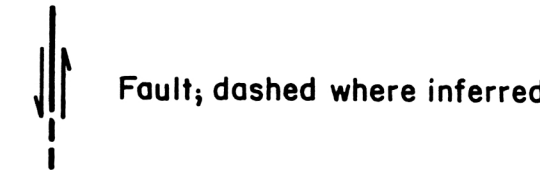
EXPLANATION

QUATERNARY

- Qal** Alluvium
Qt Terrace deposits

UPPER CRETACEOUS


- Taylor Group**
Kwc Wolf City Formation, "middle Taylor marl"
Ko Ozan Formation, "lower Taylor marl"
Austin Group
Kau Austin Chalk



Fault; dashed where inferred

Geology from surface geologic map, Plate 1;
vertical interpretations inferred

Cartography by Annie Kubert-Kearns, Bureau of Economic Geology

 Texas National Research Laboratory Commission Superconducting Super Collider			
TITLE Geologic cross sections of proposed Dallas-Fort Worth SSC site			
CITY Dallas-Fort Worth	SOURCE		SCALE
VOL.	DATE 7/3/87	NO.	