



RESERVOIR CROSS-SECTION

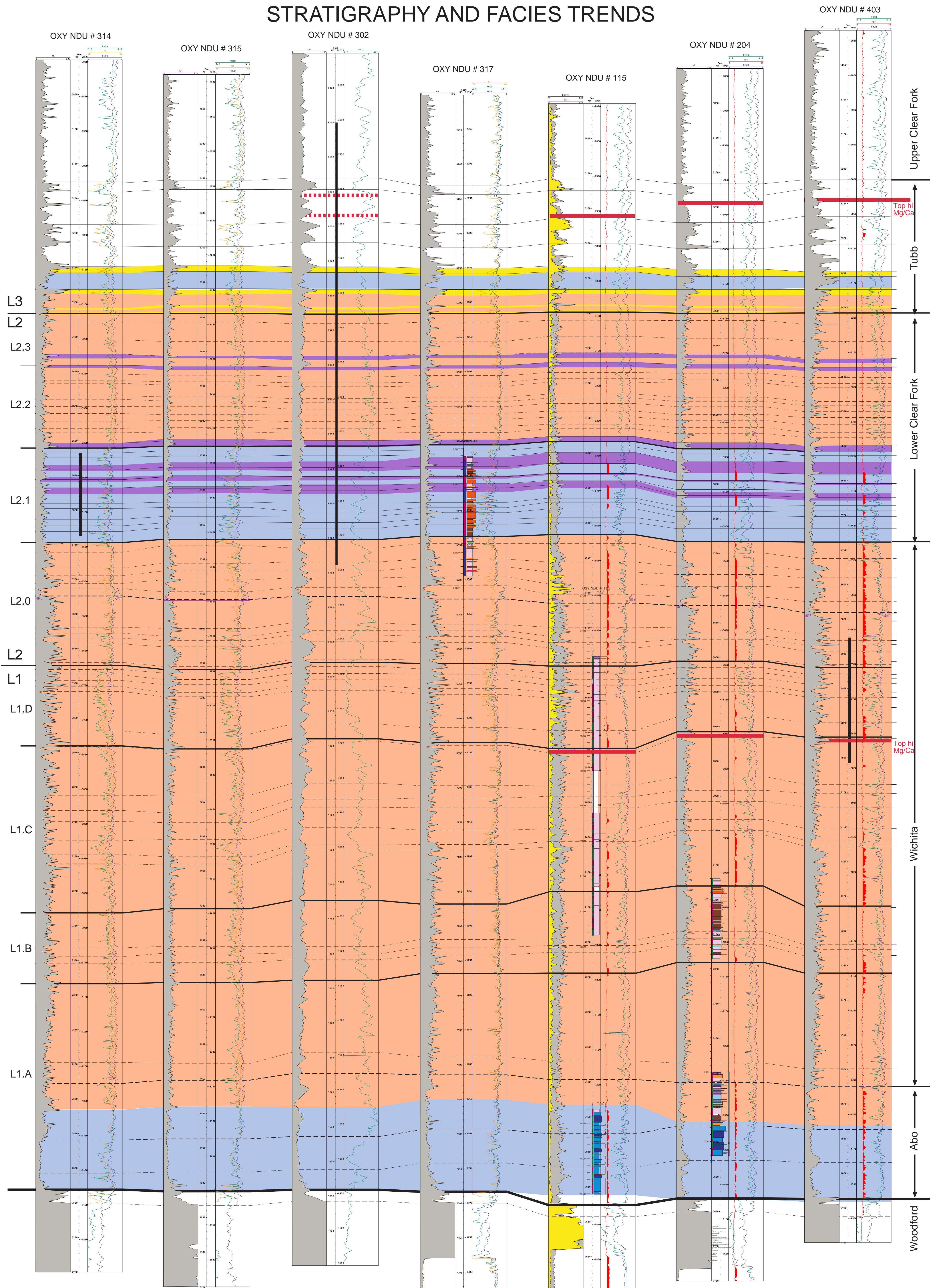
North Dollarhide Clear Fork Reservoir



West

East

STRATIGRAPHY AND FACIES TRENDS

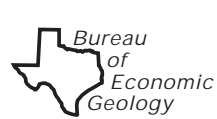


Systems Tracts and Facies

Core Facies

- Middle platform, peloidal subtidal facies
- Inner platform siltstone facies
- Inner platform, weakly cyclic peritidal facies
- Outer platform clinoformal open marine skeletal facies
- Tidal-flat facies

- Tidal flat (exposed)
- Tidal flat (mudstone-wackestone)
- Mudstone
- Peloid wackestone-packstone
- Skeletal wackestone
- Peloid packstone
- Peloid grain-dominated packstone
- Ooid/peloid grain-dominated packstone
- Siltstone/sandstone
- Fusulinid/peloid packstone
- Mixed, poorly sorted skeletal packstone-wackestone
- Mixed, well-sorted, skeletal grain-dominated packstone
- Oncolite packstone
- Lithoclast breccia
- No core



Geology by S. C. Ruppel
Bureau of Economic Geology