

The Shepherd of the Hills Gazette

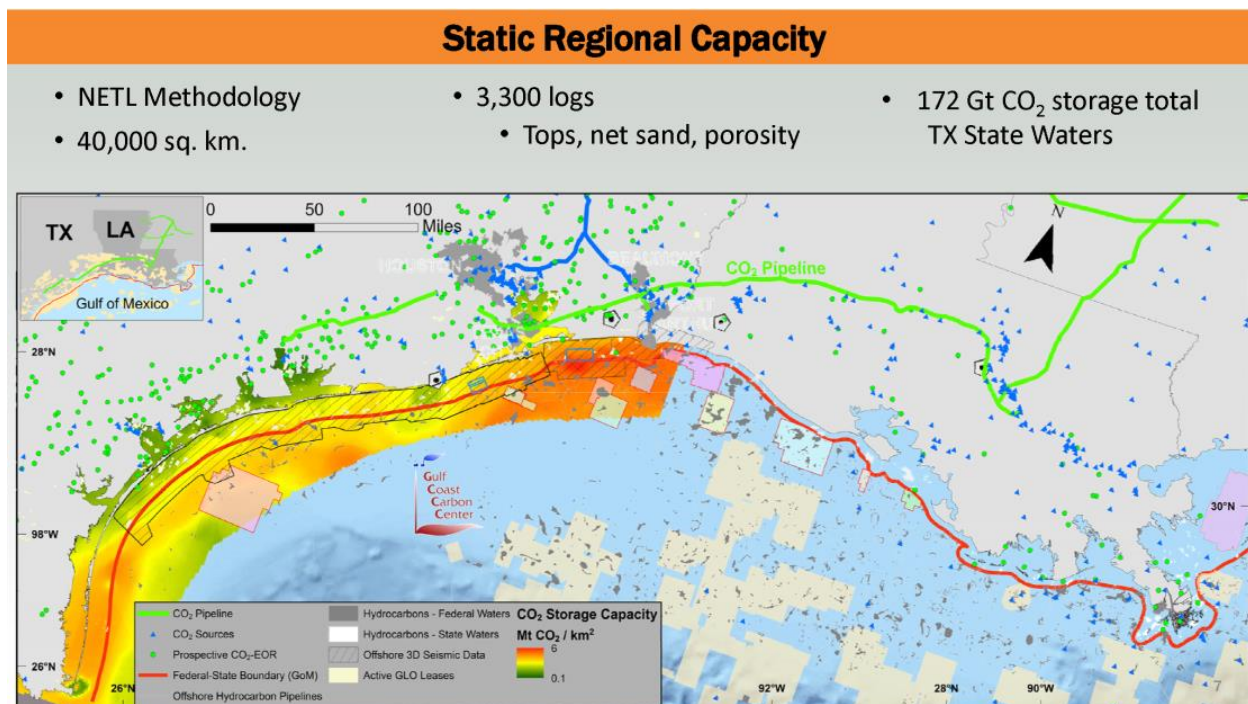
The American Petroleum Institute did what? As a result of local weather? – Watts Up With That?

CCS/CCUS can't solve the problem... even if it exists

The U.S. Energy Information Administration estimates that in 2019, the United States emitted 5.1 billion metric tons of energy-related carbon dioxide, while the global emissions of energy-related carbon dioxide totaled 33.1 billion metric tons.

USGS

The Bureau of Economic Geology at the University of Texas estimates that the geological storage capacity in Miocene strata under Texas state waters is 172 Gt CO₂.



Texas State Waters CO₂ Storage Capacity From Meckel, Treviño & Hovorka, 2019

172 Gt CO₂ is equivalent to 34 years of U.S. energy-related CO₂ emissions. That's a small fraction of the rest of the Gulf of Mexico. There is no lack of pore space for CO₂ storage in the subsurface.