

[Skip to content ↓](#)



Updates on campus operations, resources & stories related to COVID-19

[Campus Updates](#) [Campus Stories](#)



Close Banner



The University of Texas at Austin

[The University of Texas at Austin](#)

March 09, 2021

UT NEWS

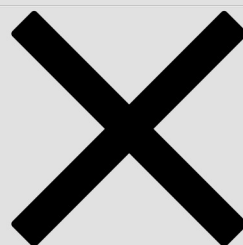
[UT News](#)

MENU

Navigation



Search



Close Navigation

[UT News](#)

UT NEWS

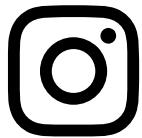
- [News](#)
- [Opinions](#)
- [Series](#)

-
- [UT Stories: COVID-19](#)
 - [Science & Technology](#)
 - [Health & Wellness](#)
 - [Arts & Humanities](#)
 - [Education & Leadership](#)
 - [Business & Economy](#)
 - [Campus & Community](#)
 - [Policy & Law](#)

-
- [For Journalists](#)
 - [Press Releases](#)
 - [Media Contacts](#)
 - [Experts Guide](#)
 - [Pitch Form](#)
 - [Archive](#)



- [UT Austin on Twitter](#)



- [UT Austin on Instagram](#)



- [UT Austin on Facebook](#)



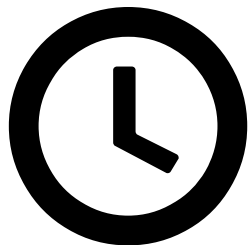
- [UT Austin on LinkedIn](#)

Search for content on UT News



Search Button

[Science & Technology](#)



Feb 24, 2021

Asteroid Dust Found in Crater Closes Case of Dinosaur Extinction



The asteroid impact led to the extinction of 75% of life, including all non-avian dinosaurs. Credit: Willgard Krause/Pixabay.

AUSTIN, Texas — Researchers believe they have closed the case of what killed the dinosaurs, definitively linking their extinction with an asteroid that slammed into Earth 66 million years ago by finding a key piece of evidence: asteroid dust inside the impact crater.



The crater left by the asteroid that wiped out the dinosaurs is located in the Yucatán Peninsula. It is called Chicxulub after a nearby town. Part of the crater is offshore and part of it is on land. The crater is buried beneath many layers of rock and sediment. A 2016 mission led by the International Ocean Discovery Program extracted rock cores from the offshore portion of the crater. Credit: The University of Texas at Austin/Jackson School of Geosciences/ Google Map.

Death by asteroid rather than by a series of volcanic eruptions or some other global calamity has been the leading hypothesis since the 1980s, when scientists found asteroid dust in the geologic layer that marks the extinction of the dinosaurs. This discovery painted an apocalyptic picture of dust from the vaporized asteroid and rocks from impact circling the planet, blocking out the sun and bringing about mass death through a dark, sustained global winter – all before drifting back to Earth to form the layer enriched in asteroid material that’s visible today.

In the 1990s, the connection was strengthened with the discovery of a 125-mile-wide Chicxulub impact crater beneath the Gulf of Mexico that is the same age as the rock layer. The new study seals the deal, researchers said, by finding asteroid dust with a matching chemical fingerprint within that crater at the precise geological location that marks the time of the extinction.

“The circle is now finally complete,” said Steven Goderis, a geochemistry professor at the Vrije Universiteit Brussel, who led the study published in *Science Advances* on Feb. 24.

The study is the latest to come from a 2016 International Ocean Discovery Program mission co-led by The University of Texas at Austin that collected nearly 3,000 feet of rock core from the crater buried under the seafloor. Research from this mission has helped fill in gaps about the [impact](#), [the aftermath](#) and the [recovery of life](#).

The telltale sign of asteroid dust is the element iridium – which is rare in the Earth’s crust, but present at elevated levels in certain types of asteroids. An iridium spike in the geologic layer found all over the world is how the asteroid hypothesis was born. In the new study, researchers found a similar spike in a section of rock pulled from the crater. In the crater, the sediment layer deposited in the days to years after the strike is so thick that scientists were able to precisely date the dust to a mere two decades after impact.

“We are now at the level of coincidence that geologically doesn’t happen without causation,” said co-author Sean Gulick, a research professor at the UT Jackson School of Geosciences who co-led the 2016 expedition with Joanna Morgan of Imperial College London. “It puts to bed any doubts that the iridium anomaly [in the geologic layer] is not related to the Chicxulub crater.”

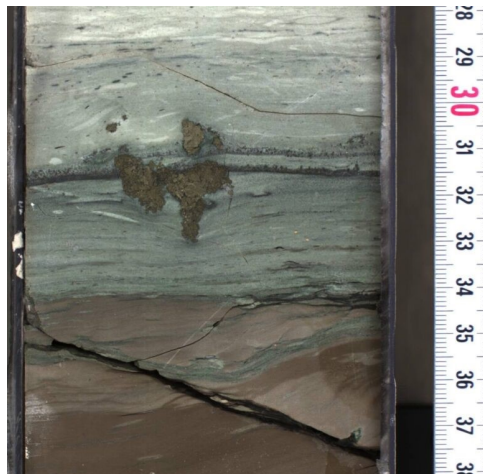


Sean Gulick, a research professor at The University of Texas at Austin Jackson School of Geosciences (right), and Joanna Morgan, a professor at Imperial College London, examine rock cores retrieved from the crater during the 2016 research mission led by the International Ocean Discovery Program. Credit: The University of Texas at Austin/ Jackson School of Geosciences.

The dust is all that remains of the 7-mile-wide asteroid that slammed into the planet millions of years ago, triggering the extinction of 75% of life on Earth, including all nonavian dinosaurs.

Researchers estimate that the dust kicked up by the impact circulated in the atmosphere for no more than a couple of decades – which, Gulick points out, helps time how long extinction took.

“If you’re actually going to put a clock on extinction 66 million years ago, you could easily make an argument that it all happened within a couple of decades, which is basically how long it takes for everything to starve to death,” he said.



A section of rock core pulled from the crater left by the asteroid impact that wiped out the dinosaurs. Researchers found high concentrations of the element iridium –a marker for asteroid material –in the middle section of the core, which contains a mixture of ash from the impact and ocean sediment deposited over decades. The iridium is measured in parts per billion. Credit: International Ocean Discovery Program.

The highest concentrations of iridium were found within a 5-centimeter section of the rock core retrieved from the top of the crater’s peak ring – a high-elevation point in the crater that formed when rocks rebounded then collapsed from the force of impact.

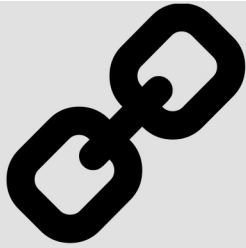
The iridium analysis was carried out by labs in Austria, Belgium, Japan and the United States.

“We combined the results from four independent laboratories around the world to make sure we got this right,” said Goderis.

In addition to iridium, the crater section showed elevated levels of other elements associated with asteroid material. The concentration and composition of these “asteroid elements” resembled measurements taken from the geologic layer at 52 sites around the world.

The core section and geologic layer also have earthbound elements in common, including sulfurous compounds. A 2019 study found that sulfur-bearing rocks are missing from much of the rest of the core despite being present in large volumes in the surrounding limestone. This indicates that the impact blew the original sulfur into the atmosphere, where it may have made a bad situation worse by exacerbating global cooling and seeding acid rain.

Gulick and colleagues at the University of Texas Institute for Geophysics and Bureau of Economic Geology – both units of the UT Jackson School – plan to return to the crater this summer to begin surveying sites at its center, where they hope to plan a future drilling effort to recover more asteroid material.



Copy link



[Email Share Link](#)

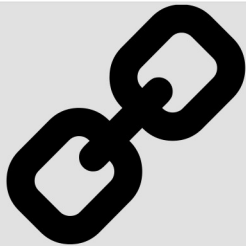


[Twitter Share Link](#)



[Facebook Share Link](#)

[LinkedIn Share Link](#)



Copy link



[Email Share Link](#)



[Twitter Share Link](#)





[Facebook Share Link](#)

[LinkedIn Share Link](#)

Media Contact

Monica Kortsha

Jackson School of Geosciences

p: 512-471-2241

e: mkortsha@jsg.utexas.edu



The University of Texas at Austin

The University of Texas at Austin

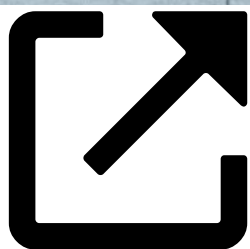
Explore Latest Articles

Mar 09, 2021

[Eyes of Texas History Committee Issues Report on School Song](#)

[Read More Eyes of Texas History Committee Issues Report on School Song](#)





School of Law

Mar 08, 2021

[History-Makers: The First Women At Texas Law](#)



[Read More History-Makers: The First Women At Texas Law](#)

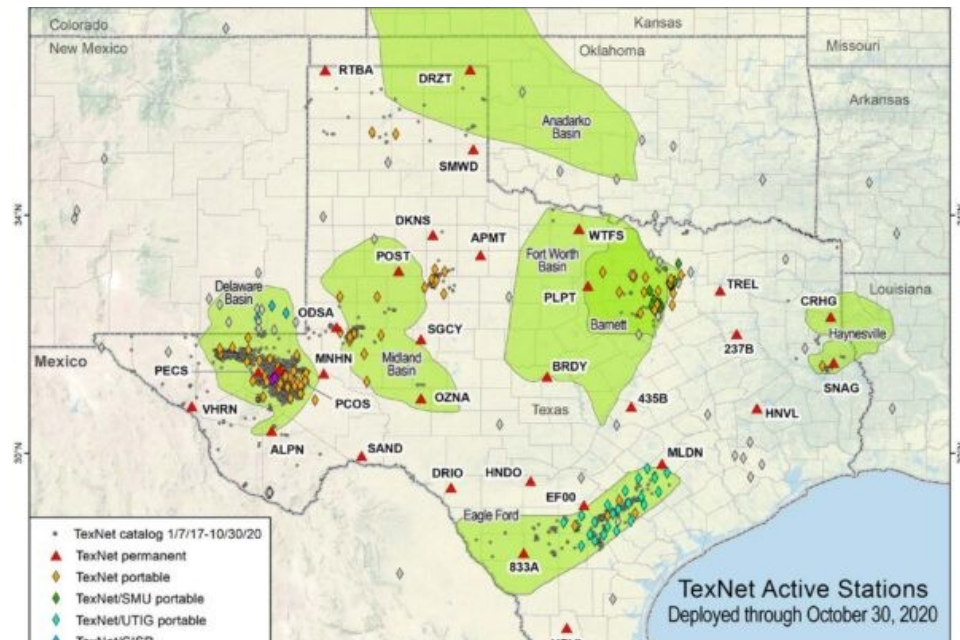


Mar 08, 2021

[Texas Earthquake System Strengthens National Network](#)

[Read More Texas Earthquake System Strengthens National Network](#)





TEXAS

The University of Texas at Austin

[Subscribe to the TEXAS Newsletter](#)



- [UT Austin on Twitter](#)



- [UT Austin on Instagram](#)



- [UT Austin on Facebook](#)



- [UT Austin on LinkedIn](#)
- [UT News Home](#)
- [For Journalists](#)
- [Press Releases](#)
- [Media Contacts](#)
- [Experts Guide](#)
- [News Archive](#)
- [Pitch Form](#)
- [UT Austin Home](#)
- [Site Policies](#)
- [Web Privacy Policy](#)
- [Emergency Information](#)
- [Web Accessibility Policy](#)
- [Disability Resources](#)

© The University of Texas at Austin 2021