



Bureau of Economic Geology

Where energy, the environment, and the economy converge

Established in 1909, the Bureau of Economic Geology is the oldest organized research unit of The University of Texas, and is the Texas State Geological Survey. Scott W. Tinker serves as its Director and as State Geologist of Texas. Our mission is to serve society by conducting objective, impactful, and integrated geoscience research on relevant energy, environmental, and economic issues. Our vision is to be a trusted scientific voice to academia, industry, government, and the public, whom we serve. The Bureau is part of the Jackson School of Geosciences at The University of Texas at Austin.



The Bureau is an international leader in a number of research thrusts, working at the intersection of energy, the environment, and the economy, with strengths that include:

- Unconventional oil and gas exploration and production
- Salt tectonics
- Natural fractures and structural diagenesis
- Subsurface micro- and nanosensing
- Reservoir characterization in carbonates, mudrocks, and sandstones
- Carbon storage in geological reservoirs
- The water-energy nexus
- Energy economics

Talented people are the Bureau's formula for success. The research staff includes more than 130 scientists, engineers, and economists, representing 27 countries, working in integrated, multidisciplinary research teams. Together with 40 skilled graduate students, 10 postdocs, and 50 professional support staff, they find solutions to the world's greatest challenges in energy and environmental research.

Superb facilities and equipment give researchers the tools they need to find objective, rock-based research answers.

- More than 15 individual laboratories hosting research teams investigating everything from nanoparticles to shale porosity and permeability
- Three massive well core research and storage facilities, in Houston, Austin, and Midland—collectively, the largest archive of rock material in the world



- One of the largest collections of well logs in the U.S.
- An extensive inventory of modern imaging devices and integrated technologies for outcrop and land-surface mapping

Over 100 years of producing research results have earned the Bureau an unparalleled reputation. Successful outcomes can be measured by many yardsticks, and Bureau researchers more than measure up.

- Over 150 peer-reviewed articles, books, and maps published annually
- Hundreds of abstracts and peer-reviewed articles published each year in conference proceedings volumes
- More than 50 keynote addresses made annually
- Researchers are frequently presidents of international professional societies, editors of major professional journals, and recognized by peers with top medals and awards in their fields

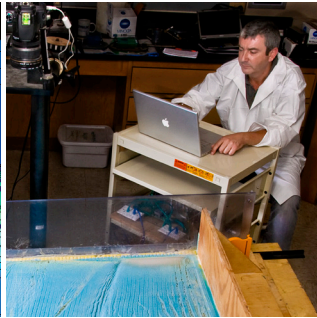
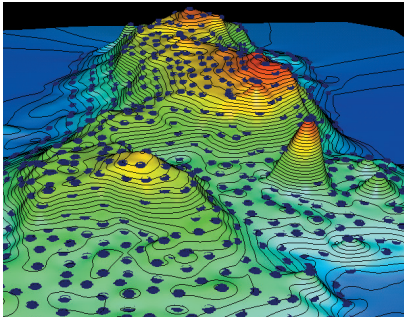


www.beg.utexas.edu



With its reputation for success, external financial support flows into the Bureau.

Research and operations expenditures have increased from roughly \$10 million to more than \$30 million over the past decade. Bureau research is funded mostly via grants and contracts with various federal, state, and local governments, private agencies and foundations, and industry-based sponsors.



Government, agency, foundation, and nongovernmental organization (NGO) partners include:

- State of Texas
- U.S. Department of Energy
- U.S. Geological Survey
- NASA
- Cynthia & George Mitchell Foundation
- O'Donnell Foundation
- Alfred P. Sloan Foundation
- Environmental Defense Fund

Partnerships drive strategy, innovation, and investigation, and the Bureau engages partners, new and old, on a multitude of levels. Investments in Bureau research provide incredible returns. Corporate partners participate in and gain vital new insights from the Bureau's many research consortia.

- Advanced Energy Consortium
- Applied Geodynamics Laboratory: Salt Tectonics
- Center for Integrated Seismicity Research
- Center for Energy Economics
- Fracture Research and Application Consortium
- Gulf Coast Carbon Center
- Mudrock Systems Research Laboratory
- Quantitative Clastics Laboratory
- Reservoir Characterization Research Laboratory
- State of Texas Advanced Oil and Gas Resource Recovery
- Texas Consortium for Computational Seismology
- Tight Oil Resource Assessment



Service to society is a crucial element of the Bureau's mission, and every effort is made to inform people about geoscience issues and to provide educational outreach. The Bureau sponsors Earth Science Week Career Day for middle school students, lends personnel and expertise to the GeoFORCE college prep program for underserved students, conducts an annual Industry Day open house for company representatives, and hosts a professional Information Geologist to serve educators and the general public.

