

More[Create Blog](#) [Sign In](#)

# Then & Now Movie Locations

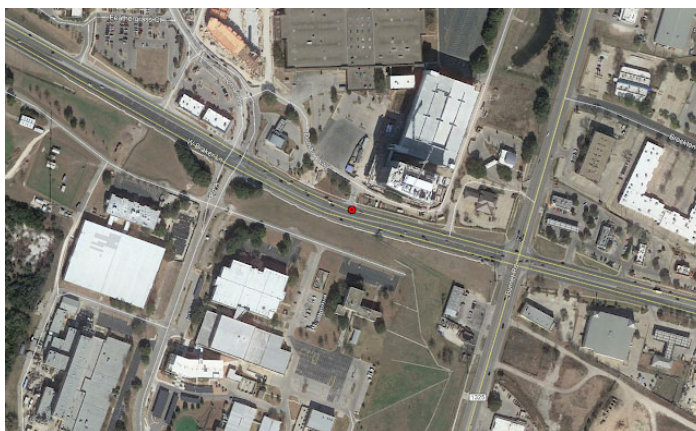
## Office Space



Office Space was released into theaters on February 19th, 1999. Filming locations include Austin and Dallas, Tx. It was written and directed by Mike Judge, who's also responsible for creating the animated shows Beavis and Butt-Head and King of the Hill. The soundtrack features a variety of music genres that include classical, country, mambo, rap and rock. The films first DVD release was on August 31st, 1999.

**Peter drives to work** - Braker Ln. Austin, Tx. 78759 (between Domain Dr. and Burnet Rd.)

Not shot on a freeway, but a high traffic three lane road. In 2017 the Domain Tower was built in the general area of filming, but the McDonald's sign can still be seen in the distance today. The building seen across the street as Peter first switches lanes is the Bureau of Economic Geology.



All "Now" pictures taken in 2019.

Then & Now Entries
<a href="#">Home</a>
<a href="#">American History X</a>
<a href="#">A Nightmare on Elm Street (1984)</a>
<a href="#">A Nightmare on Elm Street 2: Freddy's Revenge</a>
<a href="#">A Nightmare on Elm Street 3: Dream Warriors</a>
<a href="#">A Nightmare on Elm Street 4: The Dream Master</a>
<a href="#">A Nightmare on Elm Street 5: The Dream Child</a>
<a href="#">A Nightmare on Elm Street (2010)</a>
<a href="#">Army of Darkness</a>
<a href="#">Back to the Future</a>
<a href="#">Beetlejuice</a>
<a href="#">The Birds</a>
<a href="#">Breakdown</a>
<a href="#">Breaking Bad</a>
<a href="#">Bullitt</a>
<a href="#">The Butterfly Effect</a>
<a href="#">Cabin Fever</a>
<a href="#">Candyman</a>
<a href="#">Casino</a>
<a href="#">Cat's Eye</a>
<a href="#">Children of the Corn (1984)</a>
<a href="#">Children of the Corn II: The Final Sacrifice</a>
<a href="#">Child's Play</a>
<a href="#">Child's Play 2</a>
<a href="#">Christine</a>
<a href="#">The Conjuring</a>
<a href="#">Creepshow</a>
<a href="#">Creepshow 2</a>
<a href="#">The Crush</a>
<a href="#">Dark Night of the Scarecrow</a>
<a href="#">Dark Shadows The Revival (1991)</a>
<a href="#">Dawn of the Dead (1978)</a>
<a href="#">Dazed and Confused</a>
<a href="#">Dead &amp; Buried</a>
<a href="#">Death Proof</a>
<a href="#">The Devil's Rejects</a>
<a href="#">Die Hard</a>
<a href="#">Disturbing Behavior</a>
<a href="#">Donnie Darko</a>
<a href="#">Drag Me To Hell</a>
<a href="#">Duel</a>
<a href="#">Eight Legged Freaks</a>
<a href="#">The Evil Dead (1981)</a>
<a href="#">The Exorcist</a>
<a href="#">The Exorcist III</a>
<a href="#">The Faculty</a>



Initec - 4120 Freidrich Ln. Austin, Tx. 78744

With one of the exceptions being the scene where Peter knocks down his cubicle walls for an outside view, this location was primarily just used for the exterior shots of Initec. The building occupant at the time of my visit was DunAn Microstaq Inc, who moved into the building in 2013. Also, the drainage ditch that Bob, Michael, Peter and Samir walk across on their way back from lunch is just southwest of the building.

Fear
Final Destination (2000)
Fire in the Sky
Firestarter
The First Power
The Fog (1980)
Freddy's Dead: The Final Nightmare
Friday the 13th (1980)
Friday the 13th Part 2
Friday the 13th Part III: 3D
Friday the 13th Part IV: The Final Chapter
Friday the 13th Part V: A New Beginning
Friday the 13th Part VI: Jason Lives
Friday the 13th Part VII: The New Blood
Friday the 13th (2009)
Fright Night (1985)
Ghoulies
Gone Girl
The Good Son
Good Will Hunting
The Goonies
Graveyard Shift (1990)
Halloween (1978)
Halloween II (1981)
Halloween III: Season of the Witch
Halloween 4: The Return of Michael Myers
Halloween 5: The Revenge of Michael Myers
Halloween 6: The Curse of Michael Myers
Halloween H20: 20 Years Later
Halloween Resurrection
Halloween (2007)
Hannibal
Heat
Hellraiser III: Hell on Earth
The Hitcher (1986)
Hoosiers
House / House II: The Second Story
House of 1000 Corpses
The Howling
Identity
I Know What You Did Last Summer
Interview With The Vampire
I Spit on Your Grave (1978)
It (1990)
Jason Goes to Hell: The Final Friday
Jaws
Jeepers Creepers
Joy Ride
The Karate Kid (1984)



All "Now" pictures taken in 2019.



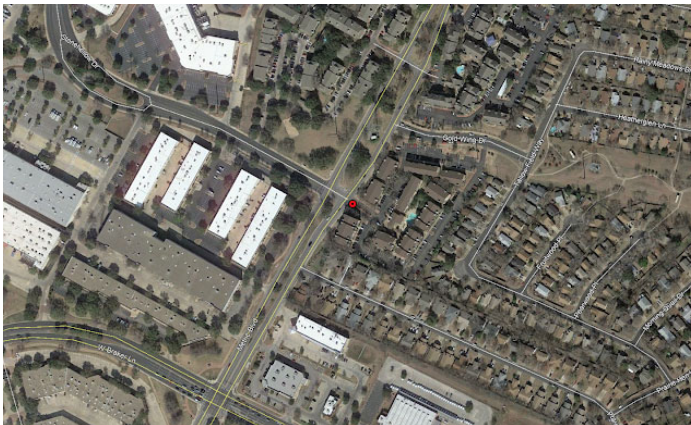
The Last House on the Left (1972)
Lord of Illusions
The Lords of Salem
The Lost Boys
Mask
Maximum Overdrive
The Mist
Near Dark
Night of the Comet
Night of the Creeps
Night of the Demons (1988)
Night of the Living Dead (1968)
Night of the Living Dead (1990)
No Country For Old Men
Office Space
One Flew Over the Cuckoo's Nest
Paranormal Activity
The People Under the Stairs
Pet Sematary
Phantasm
The Place Beyond the Pines
Poltergeist (1982)
Poltergeist II: The Other Side
Poltergeist III
Prince of Darkness
Psycho (1960)
The Punisher (2004)
The Return of the Living Dead
Return of the Living Dead Part II
Revenge of the Nerds
The Ring
Road House
Salem's Lot (1979)
The Sandlot
Scream
Session 9
The Shawshank Redemption
The Shining (1980)
The Shining (1997)
The Silence of the Lambs
Silent Night Deadly Night
Silver Bullet
Slaughterhouse Rock
Sleepaway Camp
Sleepwalkers
Stand By Me
Tales From the Crypt Presents Demon Knight
Tales From the Hood
The Texas Chainsaw Massacre (1974)
The Texas Chainsaw Massacre 2
Leatherface: Texas Chainsaw Massacre III
Texas Chainsaw Massacre: The Next Generation
The Texas Chainsaw Massacre





**Morningwood Apartments entrance** - 11511 Metric Blvd. Austin, Tx. 78758  
(The Trails of Walnut Creek)

The apartments were built in 1984.



2019

(2003)
The Texas Chainsaw Massacre: The Beginning
Texas Chainsaw 3D
They Live
Top Gun
The Town
Twilight Zone: The Movie
U Turn
Varsity Blues
Village of the Damned (1995)
Warlock
Waxwork / Witchboard
Wes Craven's New Nightmare
Wolf
The Wraith
Young Guns

#### About Me

##### Then & Now Movie Locations

[View my complete profile](#)

#### Contact Me

[l1uck3y@yahoo.com](mailto:l1uck3y@yahoo.com)

#### Then & Now Movie Locations Social Media

[Facebook](#)

[Instagram](#)

[YouTube](#)

#### Some Other Great Movie Location Sites.

[Filming Locations of Chicago and Los Angeles](#)

[Movie Locations and More](#)

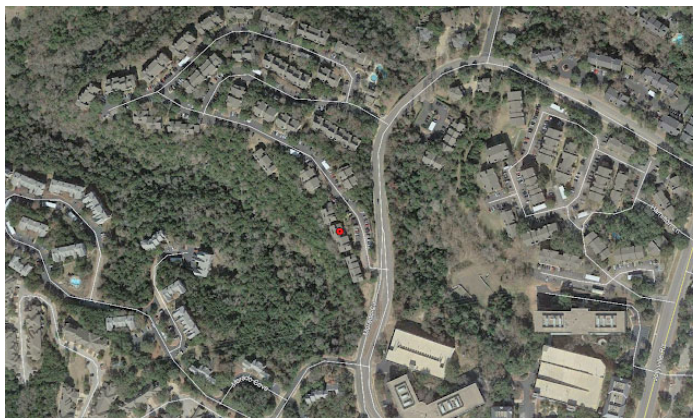
[Reel to Real Movie and TV Locations](#)

[Set-Jetter](#)

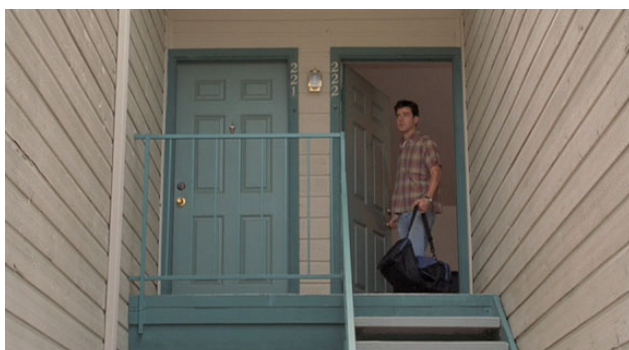


Lawrence and Peter's apartments - 10610 Morado Circle Austin, Tx. 78759  
(Great Hills apartments)

The apartments were built in 1986. I'm speculating the reason these were chosen for the actual apartments is because of the way the doors are so close to one another, making it easier for the audience to imagine the walls being so thin, therefore giving the impression that Lawrence and Peter could basically hear everything that's said or done in the other's apartment.



All "Now" pictures taken in 2019.



**Hypnotherapy** - 1010 W. Martin Luther King Jr. Blvd. Austin, Tx. 78701

The building occupant at the time of my visit was Walter Southwest Co, who has occupied the building since 1996.



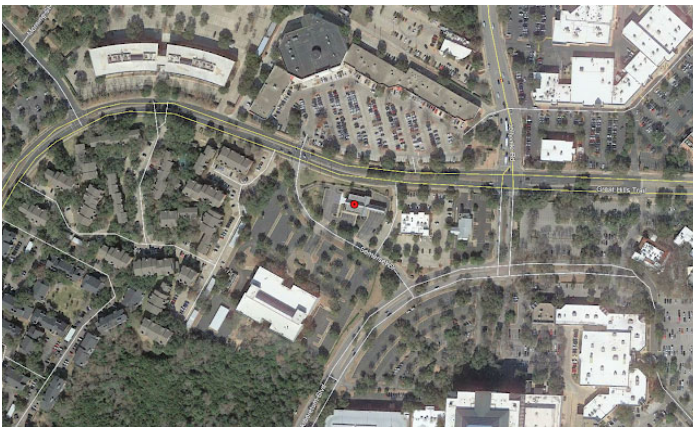


2019



Chotchkie's (exterior) - 9739 Great Hills Trail Austin, Tx. 78759

The building was constructed in 1985. At the time of my visit, it was a Chase Bank branch. The tall protruding building in the background is an AT&T Labs Research Institute.

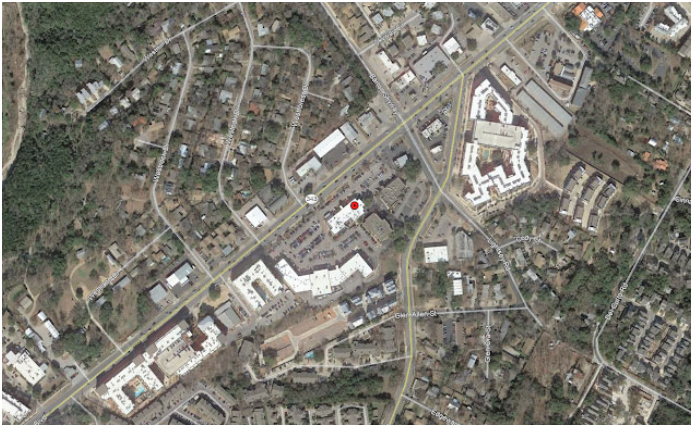


2019



Chotchkie's (interior) - 3003 S. Lamar Blvd. Austin, Tx. 78704

At the time of my visit, it was Baker St. Pub & Grill. When I stopped by, I also grabbed a bite to eat and I recommend it to anyone looking for good food, friendly service and a cool European atmosphere. The interior has been remodeled so not too much is recognizable from the film.



All "Now" pictures taken in 2019.





**Tom's house** - 1603 Glen Rose Chase Pflugerville, Tx. 78660

The house was built just a few years prior to filming. The water tower seen from the backyard was there prior to the neighborhood being constructed. The owner of the house during my visit was a nervous little guy who didn't seem to like the idea of Office Space fans visiting his house, so don't expect too much hospitality if you visit this location. There was even a "No Loitering" sign on the front porch.



All "Now" pictures taken in 2019.







Peter drops off Joanna - Gold Wing Dr. Austin, Tx. 78758

This is the first street you'll come to after the entrance to the Morningwood Apartments if you're traveling northbound.




2019



No comments:

Post a Comment

Enter your comment...

 Comment as:

Notify me

[Newer Post](#) [Home](#) [Older Post](#)

Subscribe to: Post Comments (Atom)

Some of these locations are functioning businesses or private residences so please be respectful and use common sense while visiting them.



All 'Now' images are the property of their respective owners and may not be used without their permission or consent.

Awesome Inc. theme. Powered by Blogger.