



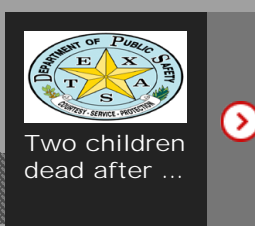
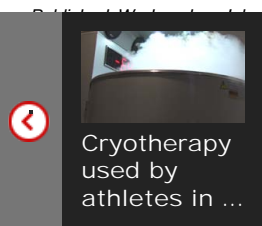
91°  
Scattered Clouds  
Alpine  
FULL FORECAST



- Home
- NEWS
- WEATHER
- SPORTS
- VIDEO
- PROGRAMMING
- SLIDESHOWS
- CONTACT US

# TexNet studies causes of earthquakes across Texas

Published 4/31/2017 5:54 pm CDT  
 Published 4/31/2017 6:26 pm CDT  
 [Name], Multimedia Journalist



## NEWS

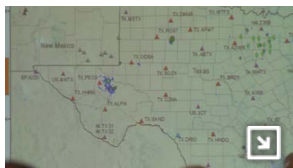
FDA to target addictive levels of nicotine in cigarettes

Trump threat: End health payments unless there's an overhaul

Beltre doubles for 3,000th hit, 1st from Dominican to do it

Man arrested after attacking family member with machete

Odessa man wanted for aggravated assault on a public servant



(Source: KWES)

MIDLAND, TX (KWES) - One geologist stopped in Midland on Wednesday to talk to the Midland Chapter of the Society of Independent Professional Earth Scientists about his studies on seismic activity.

"The entire south-central United States has seen an increase in seismicity over the last decade or so," said Dr. Peter Hennings.

Hennings is a research scientist at the University of Texas Bureau of Economic Geology (BEG). The BEG has been working on a program called TexNet that tracks earthquake activity around the state. But soon, their studies can answer the question to whether they're caused by the oil industry.

"There has been an increase in seismicity in Texas to the point where they're now typically 15 or more events that can be felt at the surface. The public has some concern about that," said Hennings. "Our research is going to help them understand where it comes from and steps taken to mitigate it if there are mechanisms to do that."

The BEG is in the process of putting out portable seismic stations in the Delaware Basin, where shale development is expected to grow in the future. Right now, TexNet has five seismic monitoring



stations in Pecos, a spot where earthquakes are prominent in West Texas.

"In the greater West Texas area and Pecos area, there is seismicity," said Hennings. "We can't say yet whether it's natural-caused seismicity or it's caused by something related to the petroleum industry, but we'll now be able to do those studies."

The BEG is studying several basins across the state and is looking at the Fort Worth Basin where earthquakes are stronger. After those studies, they'll shift their research in the West Texas region.

TexNet will have a live streaming feature where you can watch where earthquakes are happening on their [website](#). It's expected to go up in a few months.

Copyright 2017 [KWES](#). All rights reserved.

## RECOMMENDED STORIES

Recommended by Outbrain



Tropical Storm Emily makes landfall on Florida's Gulf Coast



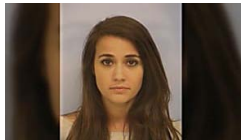
Seal Tries To Escape Brutal Orca Attack On Boat  
*Sponsored | news.dailyfeed.co.uk*



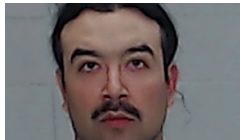
US hospitals set record for fast heart attack care



If You Are An American Resident Born Between 1936 and 1966 Check This Out  
*Sponsored | EverQuote*



Young and pretty, you'd never expect why she was arrested.  
*Sponsored | CBS News*



Man arrested, accused of threatening girlfriend with gun



Drivers With No Tickets In 3 Years Are In For A BIG Surprise  
*Sponsored | Comparisons.org*



Torchy's Tacos prepares to release the heat

## SPONSORED CONTENT

One Simple Trick to Remove Eye Bags in 1 Minute *save money every day*

Why Doctors In The Know No Longer Prescribe Blood Pressure Meds *vibranthealthnetwork*

Constant Fatigue Is A Warning Sign - Here's The Simple Fix *Health Headlines*

Mother Terrified When Hound Launches Child Across Yard, But Then She Spots His Leg *OMG!*

The 27 Most Dangerous Cities on Earth in 2017 *Modern Readers*

## WE RECOMMEND

US church denies former members' allegations of forced labor

Bicyclist dies in Murrells Inlet crash

Photo: Airport worker hits man holding baby

Woman arrested after leading police on chase of over 100 mph

'I am transgender': A US soldier shares personal journey

## MOST POPULAR

VIDEOS | STORIES | SLIDESHOWS



Police: missing girl may be in Amarillo



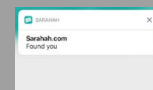
Homeowner said strangers were living in their house while at work



Former Ruby Tequila's employees meeting tomorrow

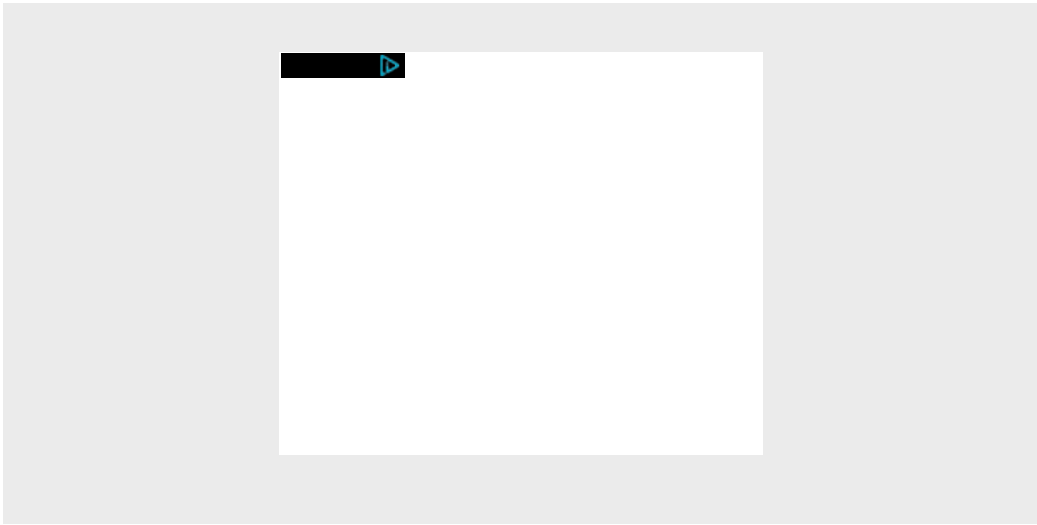


TxDOT advises alternate school route due to construction



What is Sarahah? Completely anonymous and a tad creepy

Recommended by Outbrain



Can't Find Something?



11320 West County Rd. 127  
Midland, Texas, 79711  
(432) 567-9999

KWES FCC Public File  
KWAB FCC Public File  
publicfile@kwes.com  
(432) 567-9999  
EEO Report  
Closed Captioning

[Home](#) [NEWS](#) [WEATHER](#) [SPORTS](#) [VIDEO](#) [PROGRAMMING](#) [SLIDESHOWS](#) [CONTACT US](#)

[TEXAS NEWS NOW](#)

[CW-WEST TEXAS](#)

[TELEMUNDO 20](#)

POWERED BY **frankly**

All content © Copyright 2000 - 2017 Raycom Media. All Rights Reserved. For more information on this site, please read our [Privacy Policy](#) and [Terms of Service](#).